

# Butterfly Tutorial and Chart

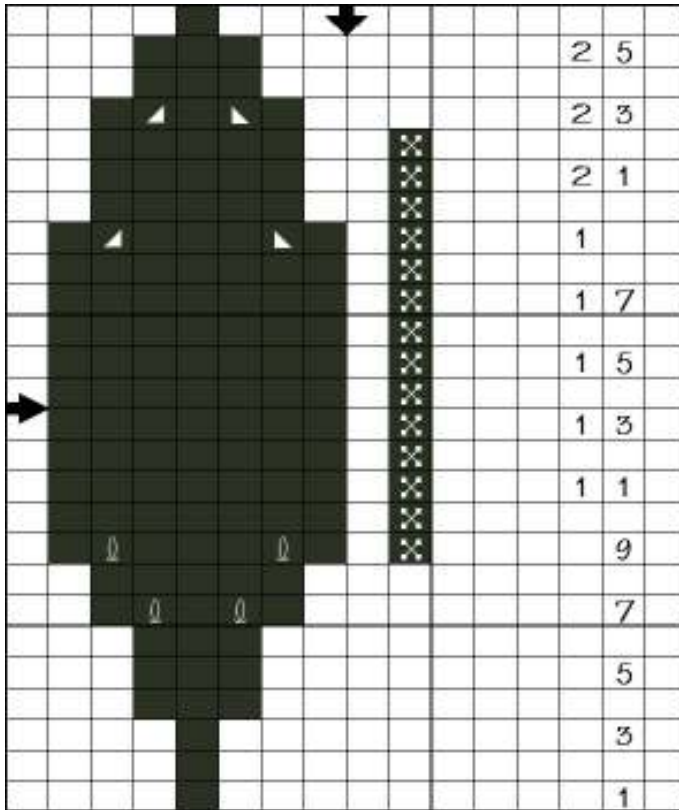
© 2013

Judith A Helms



# Butterfly Body Chart

A



To incorporate this butterfly into your design, first knit the **body** where you want the butterfly to be. You can use either chart. Chart “A” which is 3 dimensional, or Chart “B” is flat.

In chart “A” to the left you will see that I have expanded the center section of the body. Beginning at the 7<sup>th</sup> row, I made YO increases on each side of the center stitch. In row 9, the YO increases are made each side of the center 3 stitches.

Rows 19 and 23 is where you begin the decreases, reversing the expansion.

When this shaping is contracted in the back (and stuffed) to the original 3 stitches in width, it allows me to make the body rounded, raising it off the surface of the knitting.

In both charts, the **14 x’s** to the right are the rows that are used to pick up the stitches to begin the wings,

B

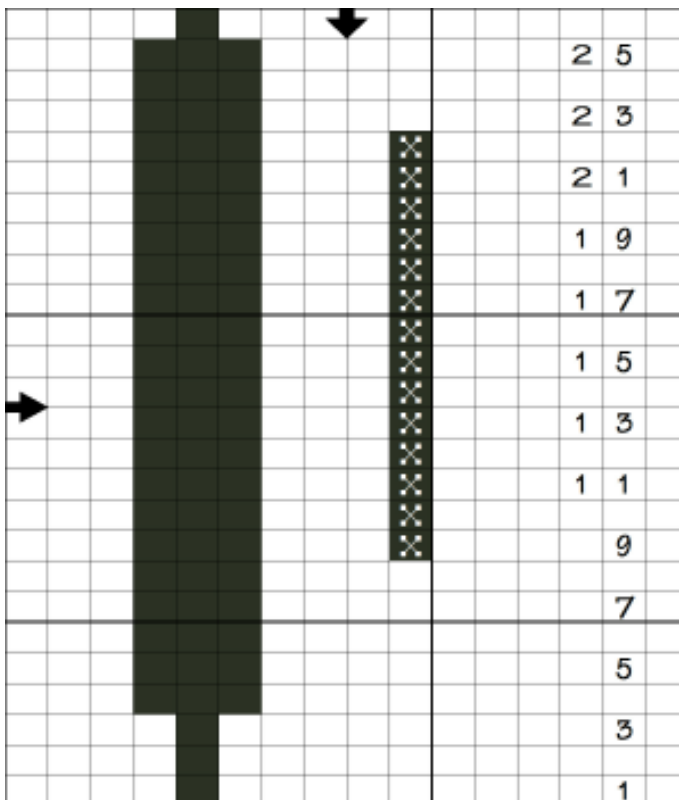
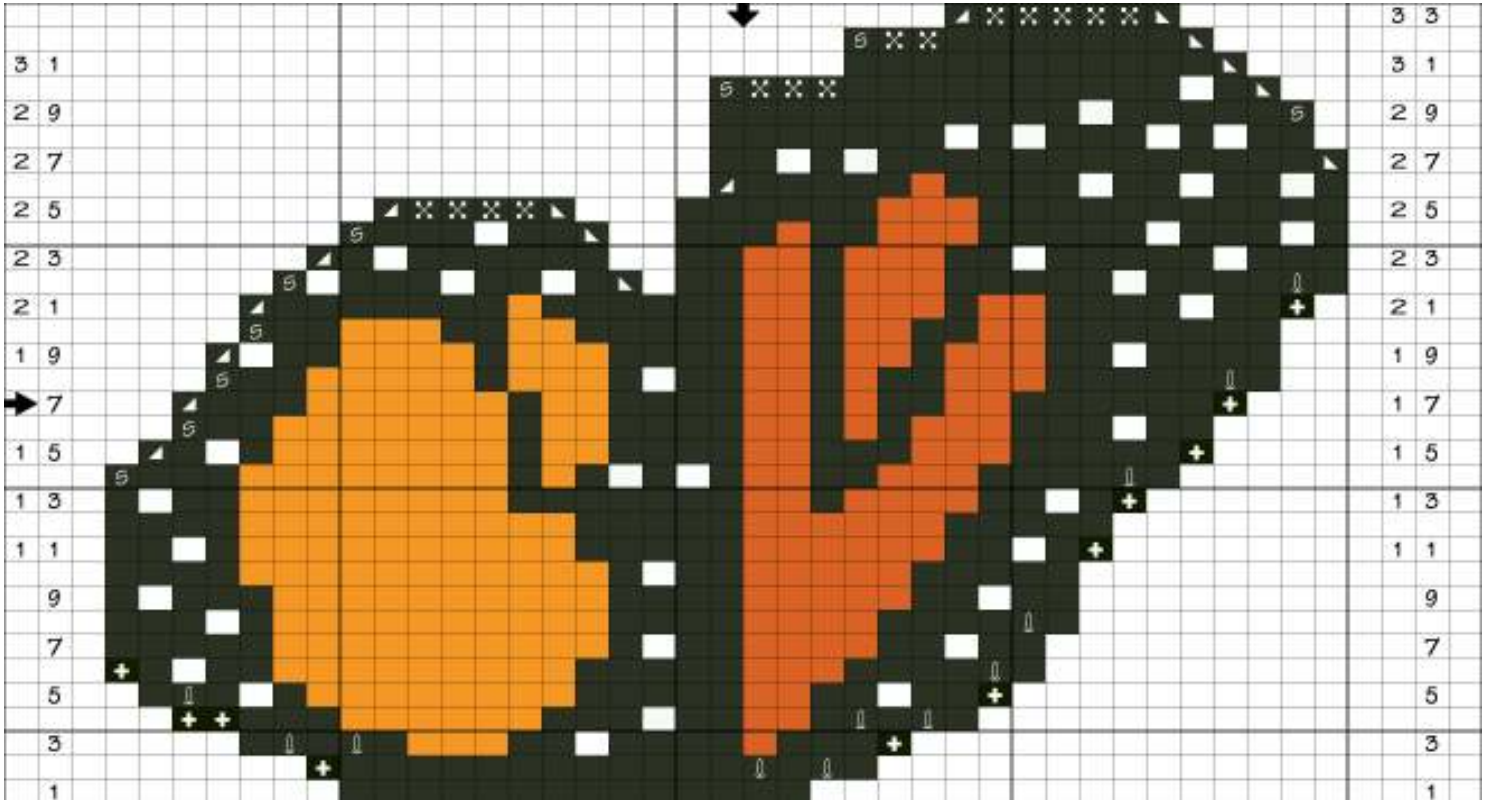




Chart “B” is a flat version of the body should you choose not to expand the body.

The gauge for this project is subject to the yarn you have at hand. However, I used fingering yarn and a size #2 needle to result in a gauge of 8 stitches and 11 rows per inch.

## Left Butterfly Wing



**Color Key** - A (black), B (rust), C (white), D (orange)

**Knitting Key** - K = knit, P = purl, SSK , K 2 tog , st = stitch

**YO** = yarn over( *on the knit side-do not bring the yarn between the needle to the front, instead, bring yarn over the top of the needle then to the back before knitting the next stitch. This move will give you the same yarn length as when you wrap around the needle for a yarn over before a purl, thus keeping the tension more consistent.*

**CO** = cast on. Chart Symbol is 

**Cast off** = Chart symbol is 

**Note** - all cast on sts are worked in the same row and counted in the stitch count that follows. Example in row 3 the cast on stitch is counted in the first 12 stitches.

With right side of work facing, turn work so that the top of the body of the butterfly is on your right. Count down 4 rows from the top and begin picking up the 14 sts on the left side of the body. This row will be counted as #1 on the chart. Turn.

Row #2 - with A, purl cast on 1 st. Purl 12 sts, YO, p 1, YO, p 1. Turn.

Row #3 - With A, CO 1 st. Knit 4 (knitting in back loop of YO). Insert B, knitting in back loop of YO. With A, K 4. Insert C, Knit 1. With A, K 2. Insert D, K 3. Insert new strand of A, K 1, YO, K 1, YO, K 1. Turn.

Now that you have all your strands inserted, follow the chart, add the stitches required at the ends of each row. Work to row 21.

**Work bottom wing only as follows.**

Row #22- With A, Slip 1. C, P 1. A, p 3. C, p 1. A, p 2. C, p 1. A, p 2 tog. Turn

Row # 23- With A, k 6. With C k 1, A, k 1, k 2 tog. Turn.

Row #24 - With A, slip 1, p 3. C, p 1. A, p 2, p 2 tog.

Row# 25 - With A, k 2 tog, cast off all stitches until 2 stitches remain. K next stitch return it to left needle. Pass stitch to left over new stitch. Fasten off last loop. Break off yarn.

**Work top wing section as follows.**

With wrong side of work facing, continue with row#22, by adding a new strand of A.

Row #22- continued-

With A, p 2. B, p 2. A, p 1. B, p 3. A, p 5. C, p 1. A, p 6. Turn.

Row #23 - With A, k 3. C, k 1. A, k 5. C, k 1. A, k 2. B, k 3. A, k 1. B, k 2. A, k 2. Turn.

Row#24 - With A, p 3. B, p 1. A, p 2. B, p 3. A, p 5. C, p 1. A, p 3. C, p 1. A, p 1. Turn p 2 tog.

Row#25 - With A, k 11 (carrying C to position in next row). B, k 3. A, k 6.

Row#26 - With A, p 2 tog, p 5. B, p 1. A, p 4. C, p 1. A, p 2. C, p 1. A, p 2. C, p 1. A, p 1. Turn.

Row#27 - With A, k 2 tog, k 12. C, k 1. A, k 1. C, k 1. A, k 2. Turn.

Row#28 - With A, p 7. C, p 1. A, p 1. C, p 1. A, p 3. C, p 1. A, p 1. C, p 1. A, p 2. Turn.

Row#29 - With A, slip 1, k 5. C, k 1. A, k 11. Turn

Row#30 - With A, slip1, cast off 4 sts, [\[14 sts remain on left needle\]](#). Cont- A, p 10. C, p 1. A, p 1, p 2 tog. Turn.

Row#31 - With A, SSK, k 11. Turn

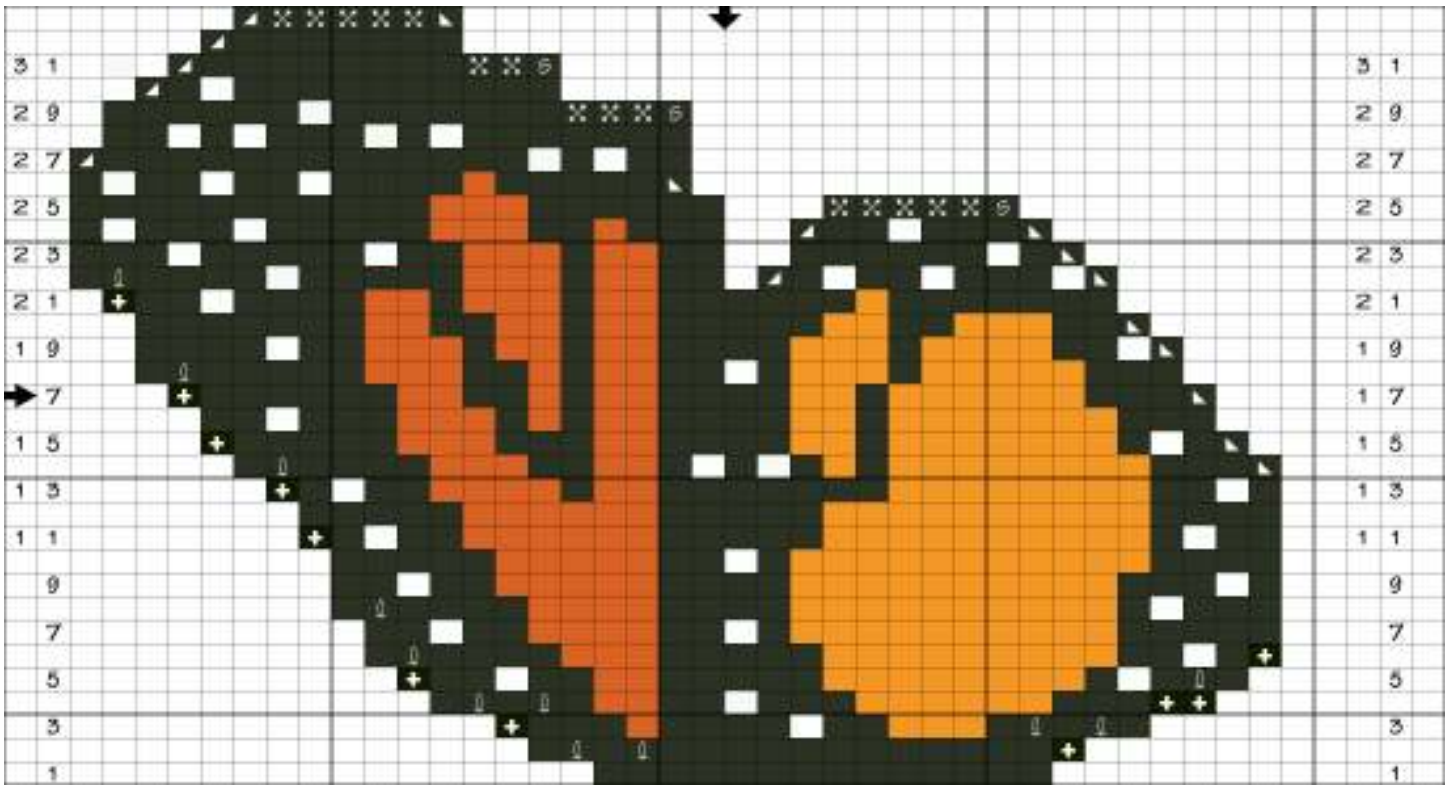
Row #32 - With A, Slip 1, cast off 3, [\[9 sts remain on left needle\]](#). Cont- p 7, p 2 tog. Turn.

Row#33 - With A, SSK, cast off until 2 sts remain on needle. Knit next stitch, then return it to the left needle. Pass the second stitch to the right over the new stitch. Fasten off the last stitch. Break yarn.

*If you need help with how to carry the yarns or to insert or end the color, check out my [Inarsiama-nia e-books](#). They are free for you to upload.*



## Butterfly wing - right side



For the right side wing begin picking up the 14 stitches from the bottom of the body directly opposite the other finished wing. Here again, the pick up row will be your Row #1 on the chart.

Follow the chart as before, inserting your yarns, making sure that you increase and decrease as indicated on the chart.

Work chart until row 21 is complete. This time, at row #22 you will begin completing the upper portion of the wing first. Follow the symbols on the chart as before. When you have the upper wing finished, then add a new strand of A, and continue row # 22, finishing the lower portion of the wing.

**Finishing-** Stuff your body, Using the same color yarn, weave the back together until it equals the width of the original 3 sts of the flat version. Add the Antennae, and the detail crocheted lines on the wings as desired.

Wash and block your creation