

Seamless Cables
Tutorial
With Sweater/Hat Pattern

Judith A Helms

© 2013



Although I will be writing up this pattern in the future, I decided to do this tutorial so that you might be able to apply it to your projects .

This swatch practice will allow you to learn the technique I used to connect the proper stitch loops to accomplish the seamless cable design in this pattern.

Once you have the technique mastered you will find you can use it to do Intarsia patterns in anything that requires working in the round.

It works for me-give it a try!

Happy knitting -

KT

Swatch Practice-Seamless Cables

Notes: for this swatch I used 40 sts, however, if you feel it would be easier to work with more on your needle-go for it. I used a 40 inch #6 circle needle and sports yarn for this swatch. You can use anything you have handy to practice with.

For this project you need to use **“long” strands** (3-5 arms lengths). DO NOT ATTEMPT THIS WITH BOBBINS OR BUTTERFLIES.

I used the magic loop method to knit in the round. You can use DPN's if you like.



*For the first 8 rows we will be working back and forth to simulate working on the shoulder of a next down pattern

Seamless Cables Swatch Instructions

Cast on 40 sts of MC.

Row #1 - Knit 17. With CC knit 6 stitches for Cable Panel. With new long strand of MC, knit 17. Turn.

Row #2 - Purl 17. With CC work cable panel, k 1, p 4, k 1. With MC purl 17. Turn

Row #3 - Knit 17. Work cable panel, p 1, slip 2 sts onto cable holder, k 2, k 2 off holder, p 1. Knit 17. Turn.

Row #4 - Work row #2. Turn.

Row #5 - Knit 17. Work cable panel-p 1, k 4, p 1. Knit 17. Turn.

Row #6 - Work row #2. Turn.

Row #7 - Work row #5.

Row #8 - Work row#2. Turn.

Row #9 - Work row #3 (Cable cross). **STOP!** Now you should be at the place where I took the photo above. Break off the yarn tail of the strand to the right of the cable panel. Temporarily secure the strand to any close purl bump on the back of the work.



Row# 9 cont-

Slide your work onto the cord of the needle and set up for knitting in the round, making sure that you leave at least 4 stitches to the left of the cable panel on the front needle tip.

Now continue knitting around until you reach the right side of the cable panel.



Next, place a marker on your knitting. As you can see I placed a coiless pin on the bottom edge.

Now pull the yarn to the front between the needle tips. Thread the end of this strand into a yarn needle.



Stick the tip of the yarn needle into the loop of the adjacent stitch of the cable panel as shown.

You will notice that it has a red strand already coming out of it which swings to the right.



At left is another view of the move.



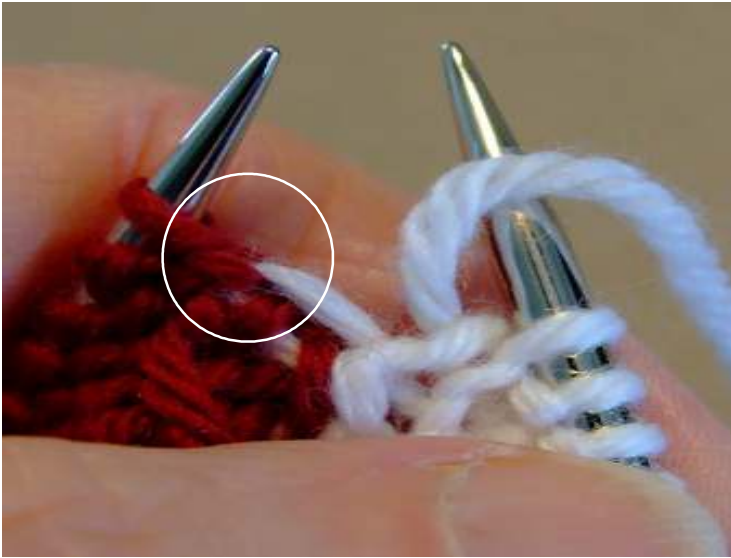
Next, pull the yarn through and to the back of your work.



Turn your work to the back and remove any slack, and begin purling back around as you start [Row #10](#).

Purl around to the cable panel, work cable panel -k 1, p 4, k 1.

STOP!!



When you reach the end of Row #10, you will be back to where we will connect the stitches before making the turn.

As you can see in the white circle to the left, a strand of the white yarn coming out of a red loop and to the right.

We will be sticking our needle into that same loop.



To begin the process, bring your yarn between the needle tips and to the back.

You are now going to insert your threaded strand into the same (red) loop going from right to left as shown.



At left is another view



Pull the yarn through, and adjust the tension.

Begin [row #11](#). Working cable panel- p 1, k 4, p 1. With MC knit around to right side of cable panel.



At left is a photo of partially completed row #11.



Once the [row#11](#) is complete, you will be back at the marker, and ready to repeat the process again.



Just as before pull the strand through to the front., Thread the end and slip it into the loop, pulling the yarn to the back of the work.

* You can also use a small crochet hook to grab the strand.



Once the yarn is in place, you will be ready to begin Row #12.

Row #12 is a repeat of row #10.

Row #13 - Repeat row #11.

Row#14 - Repeat row #10.

Row #15 - Work cable cross as before in row #3. Knit around to marker.



From here you can either bind off the stitches, run a piece of yarn through the stitches, or work some more rows for practice. It's your choice.

At left is a photo of the finished swatch, minus the bind off.



You will note that if you look at the back, the joining side loops are identical to those you did when working the original rows back and forth.

How cool it that!!!!



Here is a photo of the joined underside of the sleeve.

Sweater Pattern

I began this design with a free basic neck down raglan sleeve pattern I found on the net. From there I just began to play around. Here is the result. I hope you have fun making it.

Needles - I used size #3 , 4 and #6

Yarn - Knitpicks Stroll sports yarn. 4 skeins of Red, and 1 of White

Starting at the neck cast on 76 using #4 needle.

Row #1 - Work k 5, front border,. Work k 2, p 2, rib till 5 stitches remain on needle. Knit the last 5 sts.

Row #2 - Knit 5 sts for border. Work p 2, k 2, rib to last 5 sts. Knit 5 sts.

Row #3 -4 Repeat rows # 1- 2.

Row #5 - **Button hole row-** **Boy** - K 2, yo, k 2 tog, k 1. (Or use your favorite button hole technique) Work across as established. End k 5. **Girl** - K 5, work rib as est. To first 5 sts. K 2, yo, k 2 tog, k 1.

Button hole s are made every 9 ridges of border.

Pattern Key

K = knit; p = purl; ssk = slip, slip knit; k 2 tog = knit 2 stitches together; sts = stitches ; dec = decrease; inc = increase; MC = main color; CC = contrasting color.

Raglan Setup

Row #6 - Knit 5 sts for border; p 11; k 2 (seam); sleeve - p 1 in MC. Using CC, p 6. Using MC p1, k 2 (seam). Back p 28, k 2. Sleeve- p1. Switch to CC, p 6. Using MC, p 1, k 2, p 11; k last 5 sts for border.

Row #7 - **This row is where you start your increases at each side of the 2 purl sts used for a seam. I used M1 for mine, but you can use your favorite increase.**

With MC - Knit 5 border sts, k 11, inc 1 p 2, inc 1, k 1. With CC work 6 sts of cable panel as follows: p1, slip 2 sts to cable holder, hold in back of work. K 2, 2 sts on cable holder (right cross), p 1. Drop CC, pick up MC and k 1, inc 1, p 2, inc 1. Knit across back sts to seam. Inc 1, p 2, inc 1, k 1. Drop MC. Using CC, work cable panel as before.

Row #8 - Knit 5, p 12, k 2, p 2; With CC work cable panel - k 1, p 4, k 1. With MC p 2, k 2, p 30, k 2, p 2. With CC k 1, p 4, k 1. With MC - p 2, k 2, p 12, k 5.

Row #9 - Knit to seam, inc 1, p 2, inc 1, k 2. With CC work cable panel - p 1, k 4, p 1. With MC - k 2, inc 1, p 2, inc 1, knit across back to seam. Inc 1, p 2, inc 1, k 2. With CC - p 1, k 4, p 1. With MC - k 2, inc 1, p 2, inc 1, knit to border sts. Knit 5.

Row #10 - K 5. P 13, k 2, p 3. With CC - k 1, p 4, k 1. With MC - p 3, k 2, p 32, k 2, p 3. With CC - k 1, p 4, k 1. With MC - p 3, k 2, p 13, k 5.

Row #11 - Knit to seam, inc 1, p 2, inc 1, k 3. With CC work cable panel - p 1, k 4, p 1. With MC - k 3, inc 1, p 2, inc 1, knit across back to seam. Inc 1, p 2, inc 1, k 3. With CC - p 1, k 4, p 1. With MC - k 3, inc 1, p 2, inc 1, knit to border sts. Knit 5.

Row #12 - K 5. P 14, k 2, p 4. With CC - k 1, p 4, k 1. With MC - p 4, k 2, p 34, k 2, p 4. With CC - k 1, p 4, k 1. With MC - p 4, k 2, p 14, k 5.

Row #13 - Repeat rows 7-12, as established working increases every other row until you have 56 (62) stitches on the back and 36 (42) stitches on the sleeve sections, ending with a purl side row. **The stitch count is for 0-3 months, in the () is for 3-6 months**

* Don't forget to work your button holes every 9th ridge.

Once you have the required stitches on the needle, knit across as established to seam. Bind off the 2 seam sts. Work sleeve and cable panel, then bind off the 2 purl stitches. STOP! Peel off about 1 yard of MC yarn. Drop that tail. Next, using main ball of MC knit across back and repeat the process described for the sleeve section. Don't forget to peel of another strand and leave it behind after binding off the last two purls. Attach the main ball again and finish the row.

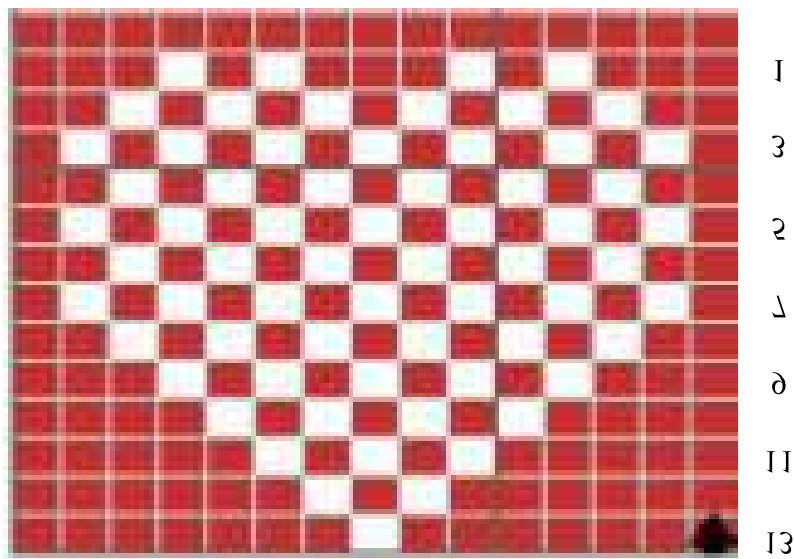
Before proceeding with knitting the body, slip the sleeve stitches on to a piece of waste yarn. Using the tails on the left side of the sleeve, weave the bound off stitches together and temporarily secure each strand. With these stitches now secure you will find that the area under the sleeve will be easier to handle.

The tails that remain will also be used to start you knitting in the round, and begin the process of creating the seamless cable panel, described in the tutorial.

Knitting the body

Knit 5, and purl across to the last 5 stitches. K 5.

Below is a chart of the heart that I design for this project. I chose to put one on each side., Beginning with the first knit row after I joined the body stitches together. The first one begins on the right chest section.



I knitted these heart using Fair Isle technique.

Knit as follows: Knit border stitches. K 9, begin chart. I use long strands of yarn for all of my color knitting, sometimes as much as 3-5 arm lengths at a time. I use the "spit splice" to join the new yarn. If you are using acrylic, you can use the Russian join.

As soon as I was done with the one heart, I began the second one on the other side.

Once you have made your 4th button hole, work 4 more ridges, with # 4 needle, begin the 2 by 2 rib for the bottom of the sweater. When the 5th button hole is complete work a couple of more rows then bind off.

I used a sewn invisible bind off for this sweater. You can use your favorite bind off.

Finishing the Sleeves

Slip the 36 (42) stitches back on to your circle needle or your DPN's. Beginning at the bottom pick up the strand that you used for the closure and knit up to the cable panel. Place you marker on the front of your knitting just so you will remember where to turn. Follow the tutorial, insert the tail of your yarn. Turn you knitting to the back side and purl around to the opposite side of the cable panel. Work the cable panel as established, insert you yarn tail into the MC as instructed in the tutorial and turn your work to the knit side.

Continue working the cable panel as established until you have completed 10 cable crosses.

Next, with your #3 needles, setup 1 by 1 ,or 2 by 2 rib, and work for about 1 ¼ inch or so. Here again I used the Kitchener stitch bind off.

Hat

Beginning with my #6 needles, I used a tubular cast on so my original stitch count was **51**. After the cast on was established with several rows of Stockinette stitch, I joined the stitches in the round knitting the extra stitch (51) with the first stitch of the beginning. From there I completed several more rounds before I completed the tubular cast on, ended up with a stitch count of 100.

Here is a link to a great site that teaches you the 2 by 2 tubular cast on.

<http://sunnythiknits.wordpress.com/tutorials-3/cast-on/tubular-cast-on/2x2-tubular-cast-on-flat-and-in-a-round/>

If you prefer to use another cast on, your stitch count would be **100**.

Work the 2 by 2 rib for about 1 inch.

Peel off about 4 strands of MC, 5 arms lengths long. Peel off 4 strands of CC, 3 arms length long.

Row #1 - Set up your cable panels as follows: Insert CC- k 6. Insert MC - k 19. Repeat 3 more times. You will have 4 panels. Place a marker at the right side of the beginning panel. This will be your turn.

Once you have completed the round and you are back to the right side of the cable panel, thread your yarn needle, insert the tail as you were instructed in the tutorial and turn your work to the back.

Row #2 - With MC, Purl around to cable panels. With CC k 1, p 4, k 1. Pick up MC and purl to next cable panel and repeat the process. When the last cable panel is complete and you are back to your marker, insert the yarn tail as instructed and turn your work.

Row #3 - With CC in hand, work cable cross as before over the 6 stitches. With MC knit 19 stitches across remaining panel of section. Repeat this process around. Once you have returned to the marker insert your yarn into the proper loop then turn.

Row #4 - With MC, Purl around to cable panels. With CC k 1, p4, k 1. Pick up MC and purl to next cable panel and repeat the process. When the last cable panel is complete and you are back to your marker, insert the yarn tail as instructed and turn your work.

Row #5 - With CC in hand, work cable panel, p 1, k 4, p 1, over the 6 stitches. With MC knit 19 stitches across remaining panel of section. Repeat this process around. Once you have returned to the marker insert your yarn into the proper loop then turn.

Row #6 - With MC, Purl around to cable panels. With CC k 1, p 4, k 1. Pick up MC and purl to next cable panel and repeat the process. When the last cable panel is complete and you are back to your marker, insert the yarn tail as instructed and turn your work.

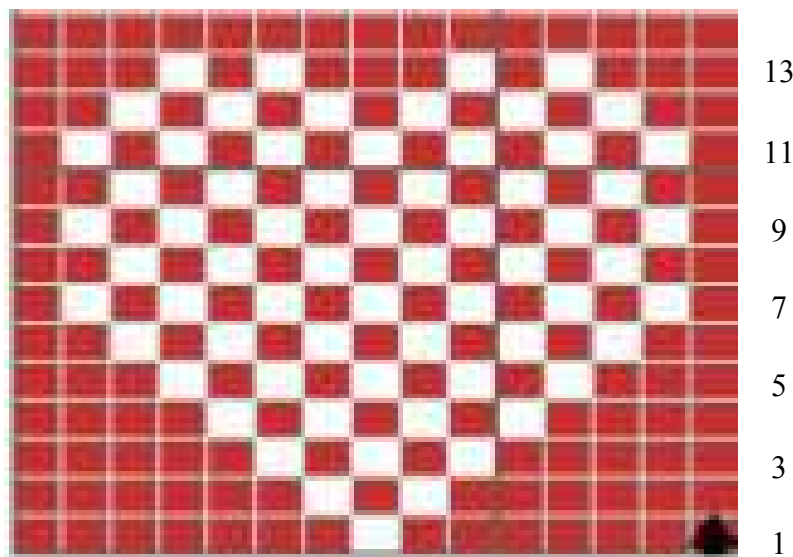
Row#7 - With CC in hand, work cable panel, p 1, k 4, p 1, over the 6 stitches. With MC knit 19 stitches across remaining panel of section. Repeat this process around. Once you have returned to the marker insert your yarn into the proper loop then turn.

Row#8 -With MC, Purl around to cable panels. With CC k 1, p 4, k 1. Pick up MC and purl to next cable panel and repeat the process. When the last cable panel is complete and you are back to your marker, insert the yarn tail as instructed and turn your work.

Row #9 - With CC in hand, work cable cross as before over the 6 stitches. With MC knit 19 stitches across remaining panel of section. Repeat this process around. Once you have returned to the marker insert your yarn into the proper loop then turn.

Repeat rows 4-9 until you have the depth of the hat you wish from the beginning. It has been suggested the you use 4 1/4 inches for preemie , 4 3/4 inches for newborn; 5 3/4 inches for 6 months, 6 1/4 inches for 12 months.

* If you wish to include the hearts in the MC panels., Begin the chart in the 10th stitch of the panel about 6-8 rows above the ribbing.



**You will note that this time you are working from the bottom up.

Crown Shaping

You will only be decreasing on the MC panels **only**.

Work the cable panels in pattern. Work the MC panels as follows on right side rows.

Row #1 of dec -K 1, ssk, k 4, ssk, k 1, k 2 tog, k 4, k 2 tog, k 1. Work cable panel as established. Repeat process on each section. Turn as before at marker.

Row #2 - Purl across MC panel, work cable panel in pattern. Repeat 3 more times.

Turn at marker as instructed in tutorial.

Row#3 - Work cable panel in pattern. Work, MC panel, k 1, ssk, k 2, ssk, k 1, k 2 tog, k 2, k 2 tog, k 1. Repeat around to marker. Turn as instructed.

Row #4 - Repeat row #2.

Row #5 - Work cable panel in pattern. Work, MC panel, k 1, ssk, ssk, k 1, k 2 tog, k 2 tog, k 1. Repeat around to marker. Turn as instructed.

Row #6 - Repeat row #2.

Row #7 - Work cable panel in pattern. Work, MC panel, k 1, ssk, k 2 tog, k 1. Repeat around to marker. Turn as instructed.

Row #8 - Repeat row #2.

Row #9 - Work cable panel in pattern. Work, MC panel, ssk, k 2 tog, Repeat around to marker.

Finishing

Thread yarn into yarn needle and run through all remaining stitches. Drawn up tightly and fasten off inside hat. Weave in all ends.

Make Pompom. Attach.

Wash and block.