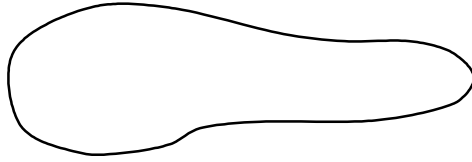


Designing Short row Charts

How did I make the short row charts?

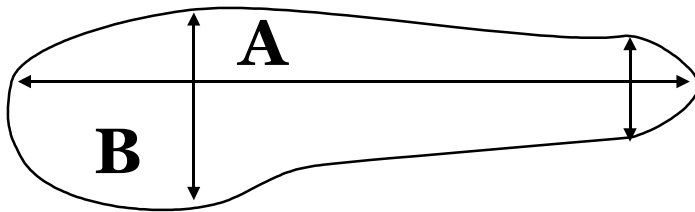
1. I drew a line around the Moccasin sole of my slipper.



2. I drew a line down the length of the pattern. Why? Because, short row shaping works best when you think of it as a “doom”, in other words, you will always be making the middle portion taller, as you leave stitches unworked at each end of the section.

**I always opt for the greatest length of the design from which to start.*

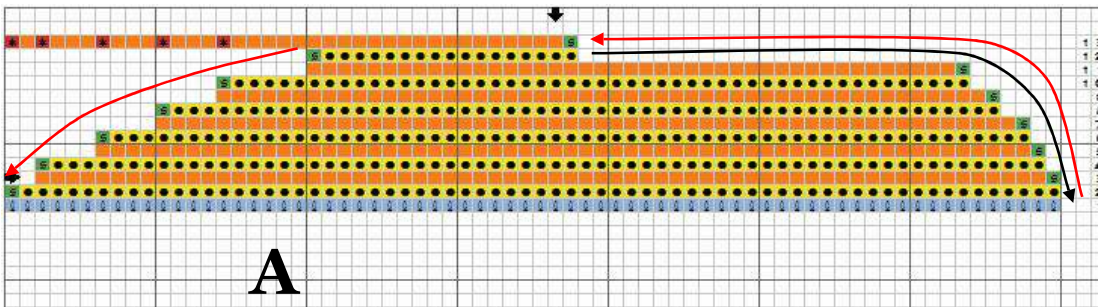
3. Measure the width of the heel, and the widest point at the base of the toes.



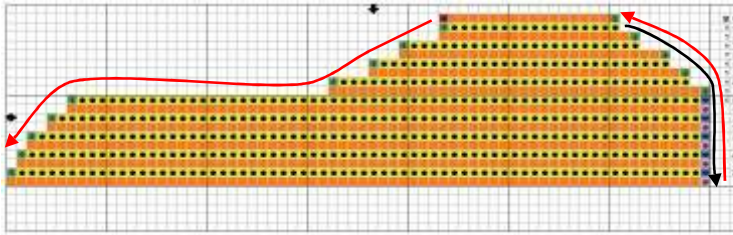
4. Make a swatch of the knitting method you intend to use. Use this gauge to chart your shape. Remember that short rows are worked in pairs, so if you need an inch depth, and your row gauge is 8, you will need 4 short row sets to achieve this height.

My heel measured about 2 ¼ inches, so I needed at least 10 rows. The finishing rows ended up making it 12 rows (discounting the cast on row), which is perfect, because I wanted the sole to be at least a ¼ larger to allow for the transition row (purl) to finish the sides.

5. Working with this information (gauge and measurements), I marked my provisional cast on in blue, then beginning with a purl row, began to building my short rows to obtain the shape I wanted. As you can see on the left, I dropped off three stitches at a time to achieve the steep angle of the side inclosing the little toe, and in row #11, I dropped off 6. Row #12 is continues to the heel, closing all the gaps. Row #13, is knitted around to the toe, and closes all the gaps for a smooth finish.



6. Having completed Section A. I flipped the chart, and beginning at the toe. Began to add the short rows to complete the design.



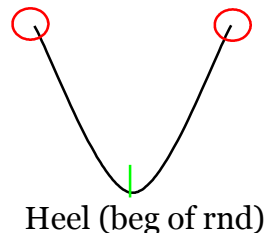
Here again I added sets of short rows to complete the other half of the heel, then began building the foot pad and toe section.

*If you will look at the right side of the about diagram you will see that there are several straight row edges. These rows will have the YO added just as you did in the swatch practice I gave you. The only difference is that they will be knitted as regular gap stitch in the final rounds. These 4 stitches extra on side B, will be used to help shape the toe.

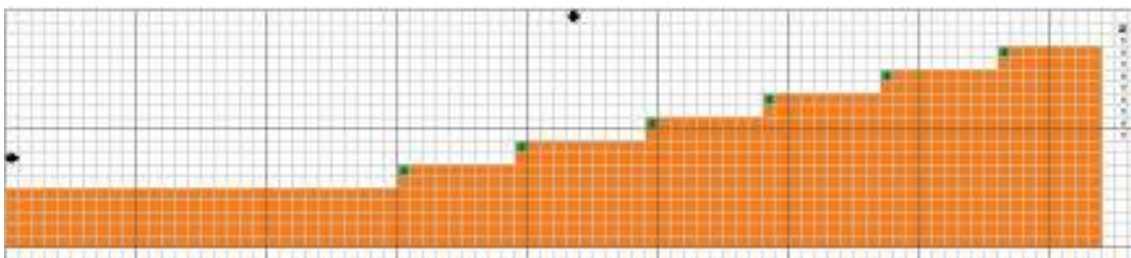
7. Here again, since I planned to end the round at the heel, my closing row will begin at row #19(purl), closing the gaps to the end of the toe section. Row #20 knits around to close all the gaps to the heel. This sets me up for the transition round, which I will purl.

Building the Sides

1. The depth at the toe was about $\frac{5}{8}$ inch. So after the purl transition round, I would have to work 5 round even.
2. My next calculation is how high my heel needed to be. This info would determine how many short row sets I needed. I needed an inch and a half more, or 12 rows at my gauge. So I marked equal distance from the heel on each side, which in this case was 54 sts from the heel on each side.



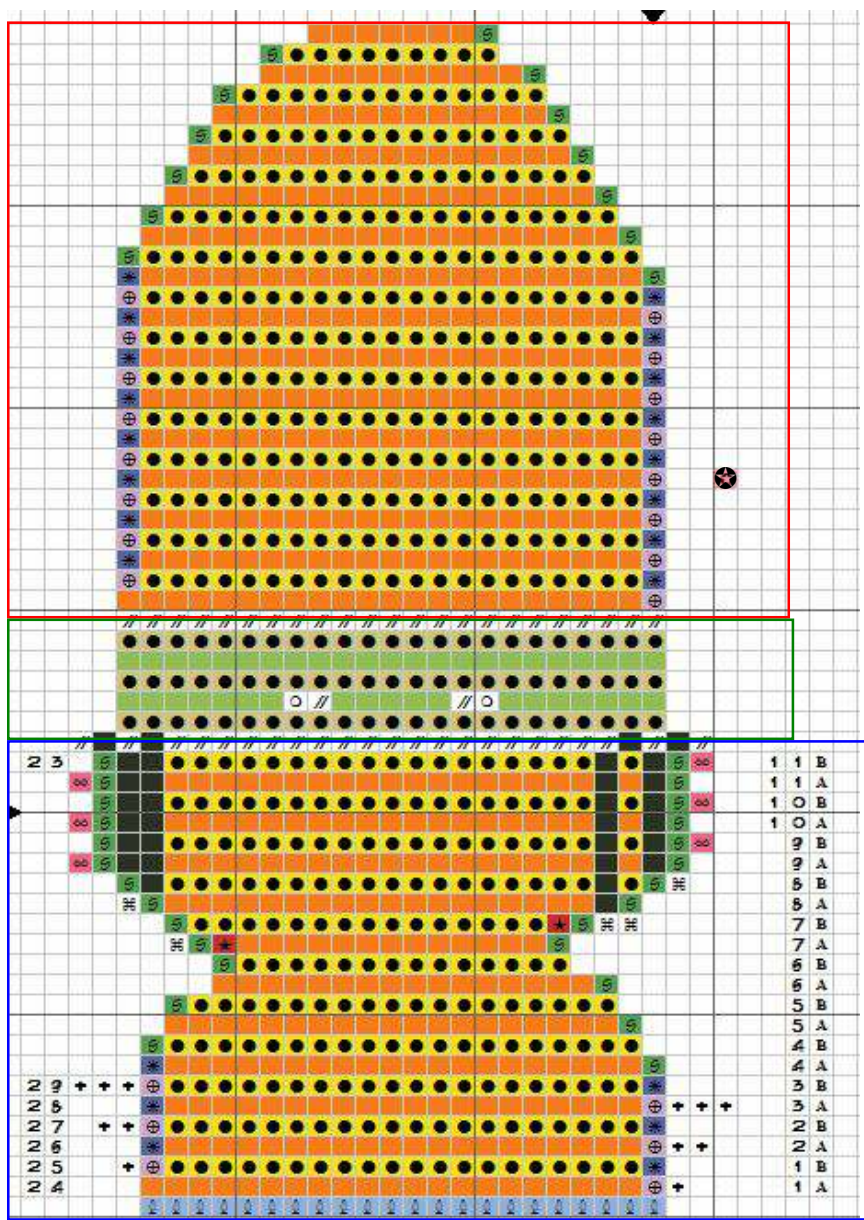
3. I divided the total number(108) of sts by 6 = 9 This let me know that I would be turning my short rows 9 sts short each row. You can see this interval in the chart below.



Designing the toe Top

Here the same rules apply. Measure, apply gauge. Draw it up.

Give it a try



Red box - toe top and under lay for casing

Green box - casing with opening for cord (knitted separately) then joined together with the purl row of the base. Details will be in the pattern.

Blue box - flap for extension into instep area.

I plan on finishing the edge beginning at the knit purl row at the top. I will close all the gaps on the left side of the toe, then turn , and purl around to close the gaps on the left side of the toe. I will keep all stitches live, except at the flap, of course. The stitches on my main slipper are also live and waiting to be finished. I will attach the toe top with a three needle bind off, then continue around and attach the cord casing of the main slipper in the same manner.

All this is just to give you a peak into the way I think through my designs. The details of the process will be written in the pattern itself. I may even include my Fair Isle design for the upper toe section.

Looking forward to sharing with you.

KT